

Coca-Cola Zero Sugar 24 x 200ml



EAN
5017726170714

Target market(s)
GB

Components

Ingredients

Carbonated Water
Colour (Caramel E150d)
Acid (Phosphoric Acid)
Sweeteners (Aspartame, Acesulfame K)
Natural Flavourings including Caffeine
Acidity Regulator (Sodium Citrates)

Nutrition

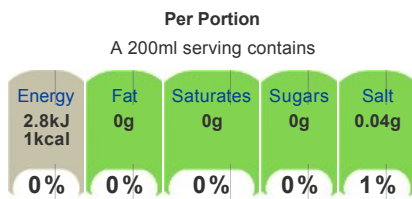
	Per 100ml	Per 200ml (%)
Energy	1.4kJ	2.8kJ
	0.3kcal	1kcal (0%)
Fat	0g	0g (0%)
of which saturates	0g	0g (0%)
Carbohydrate	0g	0g (0%)
of which sugars	0g	0g (0%)
Protein	0g	0g (0%)
Salt	0.02g	0.04g (1%)

*Reference intake of an average adult (8400kJ/2000kcal)

Calculated Nutrition

	per 100ml	Per 200ml
Energy (kJ)	1.4	2.8
Energy (kcal)	0.3	1
Fat (g)	0	0
of which saturates (g)	0	0
Carbohydrate (g)	0	0
of which sugars (g)	0	0
Protein (g)	0	0
Salt (g)	0.02	0.04

Front of Pack Nutrition



Per 100ml: 1.4kJ/0.3kcal

Reference intake of an average adult (8400kJ/2000kcal)

Product Description

Brand

Coca-Cola

Features

Zero Sugar
No Calories
This product is GMO free
This product is gluten free
This product is allergen free
This product is suitable for vegetarians/vegans

Standardised Brand

Brand - Coca-Cola

Regulated Product Name

Sparkling Low Calorie Soft Drink with Plant Extracts with Sweeteners.

Marketing

Company Name

Coca-Cola European Partners Great Britain Ltd

Company Address

Uxbridge,
UB8 1EZ.

Product Marketing

Coca-Cola Zero Sugar is the perfect drink for when you want all the taste of Coca-Cola, without the sugar or calories.

Coke Zero Sugar is a sugar free, low calorie soft drink with the great taste of original Coca-Cola.

- Zero sugar
- Zero Calories
- Contains plant extracts and sweeteners
- Contains a source of Phenylalanine

Serve ice cold for maximum refreshment.

Contains 24 individual 330ml cans.

Keep one cold in the fridge

Please recycle.

Brand Marketing

Coca-Cola and the Environment

Coca-Cola is committed to making a positive difference - to the health of the planet, consumers and the communities it serves. The company is working hard to reduce its impact on the environment in everything it does - growing more while using less in areas such as energy and water use, waste reduction and recycling - and by encouraging people to think more about the positive impact they can have on their local environment

Other Information

Contains caffeine

This product is allergen free

Contains natural flavourings
Contains added colours
Contains added intense sweeteners

Can - Metal - Widely Recycled

Further Description

A low-calorie sparkling soft drink with zero sugar and the great taste of Coca-Cola.

Coca-Cola Zero Sugar is a sugar free, low-calorie soft drink with the great taste of original Coca-Cola.

Coca-Cola Zero Sugar is the perfect drink for when you want all the taste of Coca-Cola, without the sugar or calories.

Nutritional Claims

Zero Sugar
No Calories

Health & Lifestyle

Lifestyle

- Gluten free
- Suitable for Vegans
- Suitable for Vegetarians

Allergy Advice

Celery - Free From
Cereals Containing Gluten - Free From
Crustaceans - Free From
Eggs - Free From
Fish - Free From
Lupin - Free From
Milk - Free From
Molluscs - Free From
Mustard - Free From
Nuts - Free From
Peanuts - Free From
Sesame - Free From
Soya - Free From
Sulphur Dioxide/Sulphites - Free From

Additives

Genetically Modified Ingredients - Free From
Sweeteners - Contains

Storage & Usage

Storage Type

Type

Ambient

Preparation and Usage

Best served chilled

Storage

Best before: See base of can.
Store cool and dry.

Brandbank Captured Pack Data

Pack Size

200ml e

Numeric Size

Numeric Size - 200

Pack Type

Type - Unspecified Pack

Origin

Place of Provenance - Made in GB

Recycling Scheme

- OPRL

Units

Number of Units

Number of Units - 24

Customer Services

Manufacturers Address

Coca-Cola European Partners Great Britain Ltd,
Uxbridge,
UB8 1EZ.

Return To

Coca-Cola European Partners Great Britain Ltd,
Uxbridge,
UB8 1EZ.
0800 227711
Coca-Cola.co.uk

Telephone Helpline

0800 227711

Web Address

Coca-Cola.co.uk

Extended Data

Safety Warning

Contains a Source of Phenylalanine.

Description Breakdown

Variant - Zero Sugar

