

**Changed** Apr 30, 2024 10:29

**Reviewed** Apr 30, 2024 10:29

**Erudus ID** 3ce7ef41b58e488292753981588ee3f4

**Version** 2.1



# Ribblesdale Ash Goat Log

Ash Goat Log 6x1x100g

## PRODUCT DESCRIPTION

Soft goats cheese formed into a log, coated in ash.

<b>Brand</b>	Carron Lodge Ltd.
<b>Manufacturer Product Code</b>	RIBASH
<b>Product Type</b>	Food
<b>Product Category</b>	Soft Cheese & Spreads
<b>Storage Type</b>	Chilled
<b>Erudus ID</b>	3ce7ef41b58e488292753981588ee3f4
<b>Specification Type</b>	Cheese
<b>Inner Pack GTIN</b>	5056114211516
<b>Outer Case GTIN</b>	15056114211513



## INGREDIENTS

### Ingredient Declaration

Pasteurised Goats MILK, Salt, Cultures, Vegetarian Rennet, Preservative: Potassium Sorbate E202, Activated Charcoal

## ALLERGENS

Product Contains:

<b>Celery/Celeriac</b>	No
<b>Cereals Containing Gluten</b>	No
<b>Barley</b>	No
<b>Oats</b>	No
<b>Rye</b>	No
<b>Wheat (including Spelt and Khorasan)</b>	No
<b>Crustacea</b>	No
<b>Eggs</b>	No
<b>Fish</b>	No
<b>Lupin</b>	No
<b>Milk</b>	Yes
<b>Molluscs</b>	No
<b>Mustard</b>	No
<b>Nuts (Tree)</b>	No
<b>Almond nuts</b>	No
<b>Brazil nuts</b>	No
<b>Cashew nuts</b>	No
<b>Hazelnuts</b>	No
<b>Macadamia (Queensland) nuts</b>	No
<b>Pecan nuts</b>	No
<b>Pistachio nuts</b>	No
<b>Walnuts</b>	No
<b>Peanuts</b>	No
<b>Sesame Seeds</b>	No
<b>Soybeans</b>	No
<b>Sulphur Dioxide and Sulphites</b>	No

SUPPLEMENTARY INGREDIENT INFORMATION

<b>GM Protein/DNA</b>	No
-----------------------	----

ADDITIVES

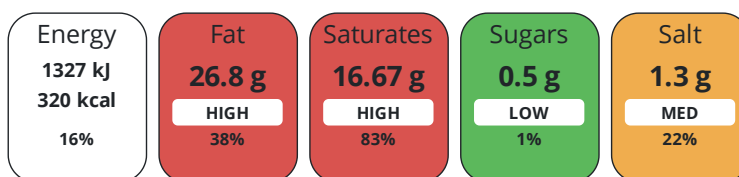
Product Contains:

DIET SUITABILITY

**Vegetarian Diet** Suitable for

NUTRITIONAL INFORMATION

Each 100g/ml portion contains:



of your reference intake.

Typical values per 100g/ml : Energy 320kcal / 1327kJ



Test	Description	Frequency	Target	Range	Sample (g or ml)	
Moisture (%)		Every Batch	<56	50 to 56	0.5	
CONFIGURATION						
Case Configuration						
<b>Variable Inner Components in Outer Case</b>				No		
<b>Total Quantity of Inner Components in Outer Case</b>				6 Units		
<b>Total Quantity of Inner Packs in Outer Case</b>				6 Units		
<b>Is the Outer Case Splittable?</b>				No		
Inner Pack Configuration						
<b>Is Inner Pack Splittable?</b>				No		
<b>Quantity of Inner Components in Inner Pack</b>				1		
PRODUCT WEIGHTS						
Inner Component						
<b>Variable Weight Consumer Item</b>				No		
<b>Inner Component Weight</b>				100 g		
<b>Net Drained Weight</b>				100 g		
<b>e mark</b>				No		
Outer Case						
<b>Outer Case Gross Weight</b>				0.73 kg		
<b>Outer Case Net Weight</b>				0.6 kg		
PRODUCT DIMENSIONS						
Inner Component						
<b>Inner Component Depth</b>				90 mm		
<b>Inner Component Width</b>				35 mm		
<b>Inner Component Height</b>				35 mm		
Inner Pack						
<b>Inner Pack Depth</b>				130 mm		
<b>Inner Pack Width</b>				70 mm		
<b>Inner Pack Height</b>				40 mm		
Outer Case						
<b>Outer Case Depth</b>				275 mm		
<b>Outer Case Width</b>				190 mm		
<b>Outer Case Height</b>				75 mm		
PALLET INFORMATION						
<b>Quantity of Cases Per Pallet Layer</b>				22 Cases		
<b>Quantity of Layers Per Pallet</b>				20 Layers		
<b>Quantity of Cases Per Pallet</b>				440 Cases		
<b>Pallet Height</b>				1.5 MTR		
PACKAGING						
Inner Component Packaging						
Type	Materials	Weight	Recycled Plastic %	Recyclable	Returnable	Composite
Tray	Plastic	6 g	- %	No	No	
Outer Case Packaging						
Type	Materials	Weight	Recycled Plastic %	Recyclable	Returnable	Composite
Case	Paper/Cardboard	96 g	- %	Yes		

## MARKETING INFORMATION

### Marketing Description

Expect a balance between the tangy, sharp flavours characteristic of goat cheese and potentially the subtle, earthy undertones introduced by the ash.

## OTHER INFORMATION

### CONTACT INFORMATION

#### Address

Carron Lodge Ltd.  
Park Head Farm, Carron Lane  
Inglewhite  
Preston  
Lancashire  
PR3 2LN  
United Kingdom

P: (Phone) 01995 640352

The information on the [Erudus System](#) has been supplied by the manufacturers of the products and, whilst the owners of the Erudus System take steps to ensure the information is regularly updated, they give no warranty and no guarantee that the information is accurate. Product information and ingredients may change, please always read product labels carefully in addition to using the information provided by Erudus.

We do not accept liability for any inaccuracies or incorrect information contained on this site.  
Please visit <http://www.erudus.com/terms-and-conditions> for full terms and conditions.